



9K Series

Heavy Duty Cylindrical Locks – Levers



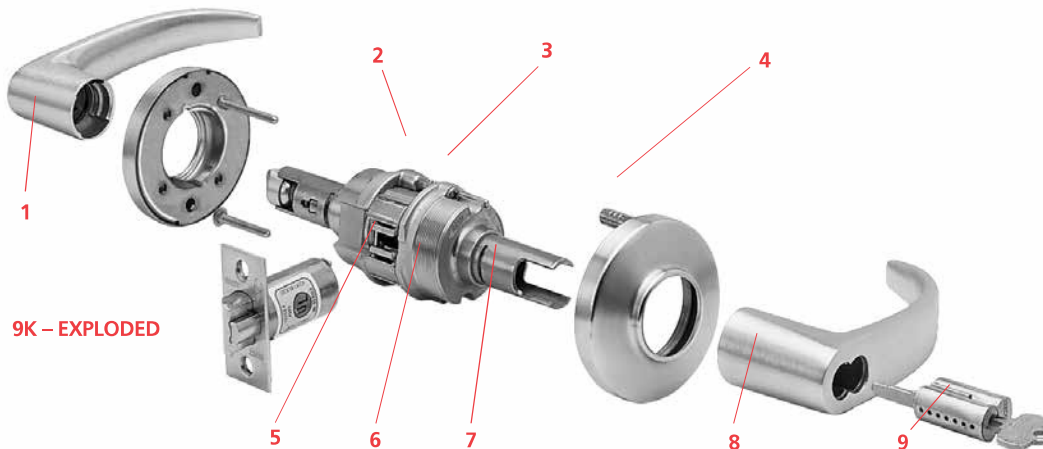
BEST: Setting the Standard for Security

TABLE OF CONTENTS

Features	2	Deadlocking Latches & Strikes	10
Specifications	2-3	Lever Features & Dimensions	5
How to Order	3	Function	6-9
Shipping Weights	4	Strike & Door Preparation.....	11
Lever Styles & Trim	4	9K Sample Specifications	11
CORMAX™ Patented Keying System	10	Service Equipment	12

Features

1. For versatile applications, lever by knob trim variations are available.
2. Rose locking pin and rose assembly design offers great torque resistance. It prevents the locking pin from twisting, bending, or breaking under attack.
3. The innovative design of the slotted key release cam and locking lug assembly create maximum attack resistance. Even though damaged, the lock still allows key access. In addition, the lever is fully functional from the inside. The hub-mounted torsion spring and strong retractor springs help prevent lever sag and offer a smooth and snappy operation.
4. Strong through-bolt mounting studs increase torque resistance. Heavy rose liner material is highly attack resistant.
5. Strong retractor springs provide resistance to lever sag.
6. Zinc hubs with a shrouded locking lug, guaranteeing higher quality and increased torque resistance.
7. The outside lever sleeve is a seamless one piece construction made of a hardened steel alloy that provides additional reinforcement in the locking lug slot.
8. Lost Motion feature available allowing 45° lever rotation in either direction without engaging retractor assembly.
9. Interchangeable core allows for quick re-keying and customized masterkeying.



Specifications

ADA—Americans With Disabilities Act: 9K series – The design and operation of the BEST® cylindrical lock meets the intent of the standard for ANSI A117.1 section 404.2.6

Builders Hardware Manufacturers Association: 9K series – Listed by BHMA for A156.2, Series 4000, Grade 1.

Underwriters Laboratories®: 9K series – Listed by Underwriters Laboratories for use on 3 Hr, A label for single or double swinging doors.

Florida Building Code and Miami-Dade County Code: 9K series – 9/16" latch throw – Listed by Florida Building Code and Miami-Dade County at ± 75 PSF for single doors. 9K series – 3/4" latch throw – Listed by Florida Building Code and Miami Dade County at ± 80 PSF for single doors and ± 50 PSF for double doors.

"WS" option must be ordered for the lock to include a "Miami-Dade County Product Control Approved" label for inspection purposes.

California State Fire Marshal: 9K series – Listed with California State Fire Marshal.

9K series 14 & 15 lever conforms with California Title 24.





Backset – 2 3/4" standard, 3 3/4" and 5" available.

Chassis – Critical latch and chassis components are brass or corrosion-treated steel. 2 1/16" diameter to fit 2 1/8" hole in door (Conforms to ANSI A115.2). Lost Motion feature available as an option. (see page 5 for options/features).

Door thickness – Available for 1 3/4" to 2 1/4" doors only. Spacers available for 1 3/8" doors.

Roses – C – 3" Convex, D – 3 1/2" Convex, K – 3" Convex-no ring, L – 3 1/2" Convex-no ring

Products protected by one or more of the following patents – 5,590,555 5,794,472 Other products patent pending.

Finishes –

(BHMA)	US	DESCRIPTION	(BHMA)	US	DESCRIPTION	(BHMA)	US	DESCRIPTION
605	3	bright brass	613	10B	oxidized satin bronze, oil rubbed	622	19	flat black
606	4	satin brass	618	14	bright nickel plated	625	26	bright chromium plated
611	9	bright bronze	619	15	satin nickel plated	626	26D	satin chromium plated
612	10	satin bronze				690	20	dark bronze

Antimicrobial Finish – 626AM satin chrome plated with UltraShield™ antimicrobial protected coating

The BEST UltraShield™ finish inhibits the growth of bacteria and other microbes on the surface of the hardware.



NOTE: BEST's UltraShield™ option is recommended for use on any hardware application where product cleanliness is a high priority. i.e.: Hospital/Healthcare, Elderly Care, Education, Transportation, Food-Service, Hospitality.

Latch – Solid brass 9/16" throw. Front 2 1/4" x 1 1/8" beveled.

Lever handles – Lever handles are a high-quality zinc alloy. Trim components are brass or bronze. Body is approximately 5/8" in diameter; Handle is approximately 4 3/4" long (from center-line of chassis). #14 and #15 levers conform to California Administrative Code Title 19 and Title 24. All three styles of levers conform to the Illinois Accessibility Standard.

Mounting – In addition to standard door preparation (ANSI A115.2 for 1 3/4" doors), two additional holes are needed for through-bolts. Through-bolts require two 5/16" diameter holes located at 12 o'clock and 6 o'clock positions. A drill jig can be ordered to insure accuracy of the holes. (see KD303 page 5).

Projection on door – Approx. 2 3/4" when mounted on 1 3/4" door.

Strike – STK: Conforms to ANSI A115.2 (2 3/4" x 1 1/8" with curved lip & box). S3: Conforms to ANSI A115.2 for 1 3/4" doors (4 7/8" x 1 1/4" with curved lip). S3-7/8: Conforms to ANSI A115.2 for 1 1/4" doors (4 7/8" x 1 7/8" flat)

How to Order

9K	3	7	AB	15	A	STK	626	
Series	Backset	Core Housing	Function Code	Lever	Rose Style	Strike Package	Standard Finishes	Options
9K	3 – 2 3/4" 4 – 3 3/4" 5 – 5"	0– keyless 7– 7-pin housing accepts all BEST® cores	AB– entrance D– storeroom L– privacy N– passage R– classroom etc.	♿14– curved return ♿15– contour angle return ♿16– curved no return	C– 3" convex D– 3 1/2" convex K– 3" convex - no ring L– 3 1/2" convex - no ring	STK– 2 3/4" ANSI S3– 4 7/8" ANSI S3– 7/8- 7/8" flat strike	605 606 611 612 613 618 619 622 625 626 690	AL– abrasive lever LL– lead lined LM– lost motion RQE– request to exit** SH– security head screws TL– tactile lever 3/4– 3/4" throw latch 7/8" LTC– flat lip strike NOTE: specify inside (I), outside (O), or both (B) for AL,TL options
			pages 6-9	pages 4-5	pages 4-5	page 11		page 5

*Handles are made from a zinc alloy, and have been plated to be equivalent in appearance to the finishes listed.

For information on 9K non-IC products please refer to BEST's non-IC keying products brochure.

**RQE option requires modification to chassis and is sold with assembly unit only.